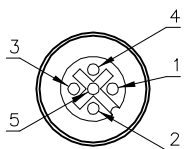
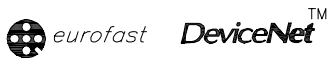


# FEMALE END VIEW

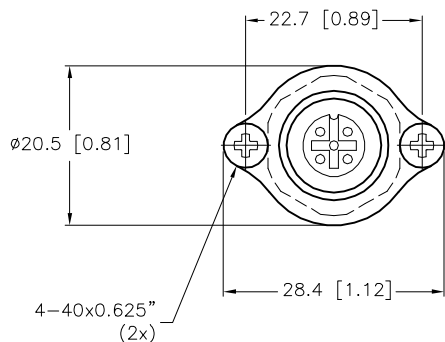


- 1 = SHIELD
- 2 = + VOLTAGE
- 3 = - VOLTAGE
- 4 = CAN\_H
- 5 = CAN\_L

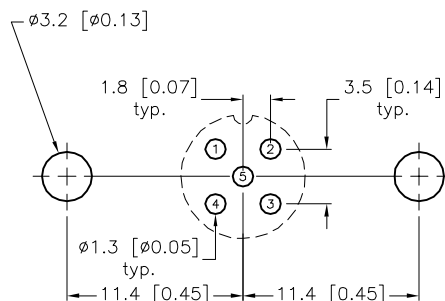


## SPECIFICATIONS

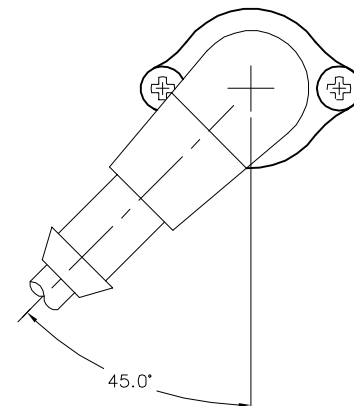
CONTACT CARRIER MATERIAL	NYLON OR TPU
CONTACT MATERIAL/PLATING	BRASS/GOLD
RATED CURRENT [A]	4.0 A
RATED VOLTAGE [V]	250 V
HOUSING/MATERIAL	BRASS/NICKEL
CONDUCTORS	PCB PINS
TEMPERATURE RATING	-30°C to +80°C (-22°F to +176°F)
PROTECTION CLASS	MEETS NEMA 1,3,4,6P AND IEC IP68



DIMENSIONAL VIEW



BOARD LAYOUT  
SCALE 2:1

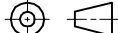



RIGHT ANGLE  
CONNECTOR ORIENTATION

### NOTES:

- FOR OTHER RIGHT ANGLE CONNECTOR ORIENTATIONS, ROTATE BOARD LAYOUT TO DESIRED ORIENTATION OR ROTATE 5-HOLE PINOUT IN INCREMENTS OF 60°.

### SOURCE DRAWING - FOR REFERENCE ONLY

RELATED DOCUMENTS 1. INSERT SHEET 10240167 2. 3. 4.		3RD ANGLE PROJECTION 		THIS DRAWING IS CONFIDENTIAL AND THE PROPERTY OF TURCK INC. USE OF THIS DOCUMENT WITHOUT WRITTEN PERMISSION IS PROHIBITED.		 <div>3000 CAMPUS DRIVE MINNEAPOLIS, MN 55441 1-800-544-7769 (763) 553-7300 (763) 553-0708 fax www.turck.us</div>			
MATERIAL SEE SPECIFICATIONS		ALL DIMENSIONS DISPLAYED ON THIS DRAWING ARE FOR REFERENCE ONLY		DRFT DF APVD DF		DATE 12/09/99 SCALE 1=1.0		DESCRIPTION FK 57-PCB KIT/100/C1101	
FINISH SEE SPECIFICATIONS		CONTACT TURCK FOR MORE INFORMATION		UNIT OF MEASUREMENT MILLIMETER [ INCH ]  DO NOT SCALE THIS DRAWING		IDENTIFICATION NO. U7274-11			
						FILE: U7274-11			SHEET 1 OF 1

F	DRAWING PROCESSED AS PART OF ECO 33971	CBM	04/07/11	33971
REV	DESCRIPTION	BY	DATE	ECO NO.